

# Local Government Council

*FY 15 Annual Report*

# LETTER FROM THE CHAIRMAN



Dear Local Government Colleague:

It is said, time and again, that you and I live in an engaged and well networked region.

Undeniably, our region's governments and partnering organizations are proud of their tradition of working together to enhance and advance our region through efficient and collaborative interaction.

The Local Government Council is especially proud of being part of that tradition as we begin our 45<sup>th</sup> year of service.

When the Local Government Council joined with the Region 2000 Partnership to better communicate and save money on regional services and operations, an effort that has proven successful, we reinvented the organization from its years as the Central Virginia Planning District Commission.

The Local Government Council, with purpose and experience, actively works with each of you to address a broad range of issues that are common to our region. Our collaborative efforts have been evidenced by successes in issues ranging from water and transportation planning to workforce and economic development.

Entrepreneurial and forward-looking, the Local Government Council has established itself as a source of quality services to the region's public sector and continues to deliver high quality services to our jurisdictions. For these reasons, all of our communities have received grant, comprehensive plan, or project management assistance from the Local Government Council.

This is all possible because the Local Government Council staff is experienced, professional and committed to serving our Region, boasting an average length of service of over nine years with the organization. Additionally, they are connected to our region as many serve on boards and councils whose missions are to enhance our already thriving communities.

It is my hope that you will join us throughout the year ahead as we continue to work together to make our region, and our local jurisdictions, even stronger and more competitive.

**Paul Harvey, Appomattox Town Mayor**  
*Chair, Local Government Council*





# TABLE OF CONTENTS



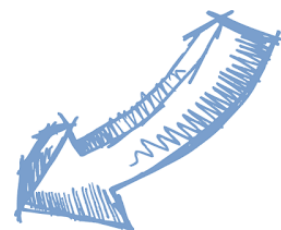
Regional Infrastructure.....	4
Transportation.....	6
Workforce Development.....	8
Local Government Services.....	12
Services Authority.....	14
Financial Report.....	16
Ride Solutions.....	17
Looking Ahead.....	18

# STRENGTHENING REGIONAL INFRASTRUCTURE

## TOBACCO COMMISSION FUNDING

### APPOMATTOX WAYFINDING SIGNS

New tourism and wayfinding signs were developed for Appomattox Town and County with the help of Tobacco Commission and Appomattox County resources.



## VDOT TRANSPORTATION ALTERNATIVES PROGRAM GRANTS

### RUSH STREET STREETScape PROJECT IN BROOKNEAL UNDERWAY

Downtown Brookneal continues to come to life as the streetscape on Rush Street is improved for vehicular traffic and pedestrians. The project is funded by the Town and VDOT's Transportation Alternatives Program.

### APPOMATTOX COUNTY TRAIL CONTINUES TO GROW

In October 2014 the first 1.33 miles of the Appomattox Heritage and Recreational Trail (AHRT) opened to the public. This AHRT Phase 1 section connects the Appomattox County Community Park to a trailhead location within the Appomattox Industrial Park.

Creating a pedestrian and bicycle corridor that would connect the Appomattox resources hubs of the Town of Appomattox, Appomattox Court House National Historical Park, and Appomattox County Community Park, has been an Appomattox community goal since 2007. Since that time, the County, Town and stakeholder partners have initiated studies and on-the-ground projects, including sidewalk installation, to bring to fruition the envisioned AHRT loop.



*AHRT – Phase 1 from Appomattox County Community Park Trailhead.*

The Local Government Council (LGC), an AHRT program partner since 2007, assisted Appomattox in secure \$218,577 in VDOT Transportation Alternatives Program (TAP) funding, matched by \$54,644 in local funds. These funds will be used for design, engineering and some construction of AHRT Phase 2 trail. Appomattox, partnering once again with LGC, also submitted a 2015 Department of Conservation and Recreation - Recreational Trails Program (RTP) application for additional AHRT Phase 2 construction funds to complete the approximate 1.02 mile extension.

UNITED STATES ECONOMIC DEVELOPMENT ADMINISTRATION

[www.region2000dashboard.org](http://www.region2000dashboard.org)

This new website is an excellent source of economic development data on the region. Built with funding from the Department of Commerce's Economic Development Administration and the Local Government Council, the website data will be used extensively in the pending update of the region's Comprehensive Economic Development Strategy.





*Currently there are no pedestrian facilities to allow safe pedestrian movement from Bedford Avenue, a VDOT major collector, to the Town's Central Business District.*

### **PEDESTRIAN IMPROVEMENTS AT ALTAVISTA GATEWAY ENTRANCE**

The Town of Altavista, through two awarded VDOT Transportation Alternative Program (TAP) awards and local match funds, will create a safe pedestrian environment at the Town's Central Business District Gateway. The Town will utilize their recent FY16 \$260,322 TAP and FY15 \$82,330 TAP awards, which will be matched with \$85,663 in local funds, to install new pedestrian signals and crosswalks at the Bedford Avenue/7<sup>th</sup> Street intersection. This area that also marks the starting point of Virginia By-Way Route 43. The project includes sidewalk improvements and lighting and street tree installation. This project serves as a natural complement to the approximate \$5.0 million in a combination of federal, state, and local public and private investment in Altavista's Central Business District.

## **VIRGINIA DEPARTMENT OF HEALTH**

### **TOWN OF AMHERST MAIN STREET WATER LINE IMPROVEMENTS**

The Town of Amherst received a below market rate loan of \$2,959,008 from VDH to replace failing and outdated water pipes along Main Street and in other areas of the Town. This work is expected to be done in conjunction with a major VDOT street maintenance project.



# IMPROVING REGIONAL TRANSPORTATION



## CENTRAL VIRGINIA LONG RANGE TRANSPORTATION PLAN

The Lynchburg region has experienced change and growth over the past years and is looking toward continued growth and prosperity in the coming decades. This year we are updating the Central Virginia Long Range Transportation Plan to support the Region's transportation system to meet new and current demands for the movement of people and goods.

We're incorporating economic development needs and the Commonwealth's new system of prioritizing road construction (HB2) into the 2040 Long Range Transportation Plan updates. See [www.cvlrtp.org](http://www.cvlrtp.org) for a listing of transportation projects and priorities.

## SUPPORT TO CENTRAL VIRGINIA MPO

The Local Government Council (LGC) supports the local officials who review and prioritize federally funded transportation projects in the greater Lynchburg metro area. The MPO coordinates numerous transportation studies for the region. Funding from these studies comes from the Federal Highway Administration, the Commonwealth of Virginia, and the LGC.

## SIMON'S RUN ACCESS IN CAMPBELL AND LYNCHBURG

The Local Government Council (LGC), in conjunction with Campbell County, conducted a corridor study of Simons Run. The study had two primary purposes: to examine alternatives for extending Simons Run to the west to intersect with Airport Road; and, to identify an appropriate pavement section for its entire length. Among other recommendations, the analysis recommended a partial intersection with Airport Road, to add bus stops to the corridor, and a recommendation for additional guidance signage for the northbound Simons Run approach at the intersection with Wards Ferry Road.



*Simon's Run Access*

## ATLANTA AVENUE IN LYNCHBURG

The Local Government Council (LGC), in conjunction with the City of Lynchburg, conducted the Atlanta Avenue Corridor Study. The purpose of the study was to examine opportunities to improve pedestrian and bicycle access from Wards Road to Wards Ferry Road in order to reduce traveling speed and to improve safety. Key recommendations from the effort included the installation of a roundabout at the intersection of Badcocks Road and Atlanta Avenue, a sidewalk connecting Wards Road and Wards Ferry Road, and the possible placement of speed table on Atlanta Avenue. The Study will be presented to the City Planning Commission and City Council in the coming months.

## SUPPORT TO GREATER LYNCHBURG TRANSIT COMPANY



Local Government Council (LGC) staff utilized funding from both the Virginia Department of Rail and Public Transportation (DRPT) and the LGC to continue to provide mapping services for fixed route service within the system. Current information has been made available to Google Transit to help inform citizens of GLTC services. In FY 16, staff will be conducting a bus stop consolidation study on heavily used GLTC corridors. Additionally, staff will continue efforts to provide assistance to GLTC in keeping bus stop data current for customers and other users.

## PROMOTING ALTERNATIVE TRANSPORTATION

The Local Government Council continues to partner with Roanoke and New River Valley regions and the Virginia Department of Rail and Public Transportation to expand our area commuter's transportation options. Through our RIDE Solutions initiative we develop programs to encourage and promote alternative transportation options and opportunities such as carpooling, transit, biking and walking.

By supporting and sharing these commuting options with area commuters and employers, RIDE Solutions is contributing to the efficiency and experience of everyone traveling along local roadways while also building stronger neighborhoods, contributing to the economic vitality of the region and expanding healthy lifestyle opportunities for area residents.

Region 2000 employees and employers can utilize RIDE Solutions programs and outreach tools to assist local commuters to lower commuting costs, support wellness programs, reduce parking demand, especially in downtown areas, and expand labor pools free of charge through funding from VDRPT grants and LGC match contributions.



# WORKFORCE DEVELOPMENT

## NEW FEDERAL WORKFORCE ACT

The Workforce Innovation and Opportunity Act (WIOA), signed into law July 2014, is now operational for the Region 2000 Workforce Development Board. Our region receives about \$1.3 million annually through the WIOA for qualified adult, displaced and youth worker training.

The new act requires much closer cooperation with local and regional economic development partners as well as education and training providers to identify skills for all of the Region's employment sectors.

## CAREER COUNSELING SERVICES TO BE OFFERED IN LOCAL LIBRARIES

Library directors in every locality report a significant number of job seekers using library resources for job search and employment issues. Over the next year, working relationships will be established with all interested libraries so that they can serve as information sites and access points into the regional One Stop system. This initiative will provide citizens direct access to career services in their local community.

The Workforce Development Board, and staff, look to expand our outreach to all geographic areas and build stronger collaboration with stakeholders in the Region 2000 Workforce System to significantly increase the number of people served.

## SKILLS GAP ANALYSIS

Region 2000 Workforce staff has focused on mapping workforce development assets and identifying gaps. A matrix is being developed including all career and technical courses offered through the region's secondary schools. This matrix will provide an inventory of career and technical courses along with their competencies and any associated credentials as well as include contact information for employers to reach school staff for information or schedule recruiting opportunities.

In the coming year, staff will begin developing a similar matrix for post-secondary education and training providers. Maintenance and construction trades are two key areas identified as needing immediate attention for career development and training. Area training providers are in the process of building or enhancing training options in both these areas.

## EMPLOYMENT STATISTICS

### LARGEST EMPLOYMENT SECTOR FOR THE REGION

- Healthcare & Social Assistance 15,781
- Manufacturing 14,523
- Retail Trade 12,694

### HIGHEST AVERAGE WAGES FOR THE REGION

- Prof., Scientific and Technical Services \$66,476
- Wholesale Trade \$57,697
- Utilities \$56,979

Regional sectors with the best job growth (or most moderate job losses) over the last 5 years are Accommodation and Food Services (+942 jobs), Health Care and Social Assistance (+736), and Retail Trade (+346). Over the next 10 years, employment in Region 2000 is projected to expand by 9,064 jobs. The fastest growing sector in the region is expected to be Health Care and Social Assistance with a +2.4% year-over-year rate of growth. The strongest forecast by number of jobs over this period is expected for Health Care and Social Assistance (+4,206 jobs), Construction (+1,575), and Professional, Scientific, and Technical Services (+925).

*\*Employment data is derived from the Quarterly Census of Employment and Wages, provide by the Bureau of Labor Statistics and imputed where necessary.*



## ONE STOP CENTER

At the August 2015, board meeting, The Region 2000 Workforce Development Board voted to move the One Stop Workforce Center from the current location; 2323 Memorial Ave, Lynchburg, to the Virginia Employment Commission office located at 3125 Odd Fellows Rd, Lynchburg. This is a temporary move while the board develops plans for a comprehensive workforce center and workforce system that serves the entire region effectively. The current location has ongoing concerns with visibility, ADA issues and water damage.

## NEW SERVICE PROVIDER



Goodwill Industries of the Valleys was awarded the contract to operate both the adult, dislocated worker and youth services

programs in Region 2000 and started operations July 1, 2015.

During 2015-16, the Region 2000 Workforce Board will work closely with Goodwill of the Valleys to establish more access points for career services throughout the region.

## HOW WE HELP WHERE THERE IS DOWNSIZING

When a business lays off workers through a closing or downsizing, Region 2000 partners closely with the Virginia Rapid Response team who assists those workers with access to training or job counseling.

During the past year, Region 2000 Workforce staff worked closely with Intersections in Altavista, Trident Seafood in Bedford, Nationwide in Lynchburg and Sweet Briar in Amherst. Discussions are on-going with the Central Virginia Training Center in Amherst.

In these situations, workforce staffs meet with dislocated workers, usually on site at the business, to answer questions regarding the layoff/unemployment process. Staff also provides resume and job seeking assistance or career development counseling.

## INCUMBENT WORKER TRAINING PROGRAM TO BEGIN IN FY 2016

The Region 2000 Workforce Development Board will be working directly with economic development staff in every locality to implement an incumbent worker training program that will be utilized as a layoff avoidance strategy.



## OUR MISSION

To advance a workforce development system that meets business and job seeker needs.

# WORKFORCE DEVELOPMENT

## SERVICES TO YOUTH

The WIOA Youth component works with young people ages 14-24 who have some type of a disadvantage. 75% of youth services funding is dedicated to out of school youth ages 16-24. This service is also contracted with Goodwill Industries of the Valleys. Additionally, the Region 2000 has been working with Jubilee Center and other at risk youth programs to provide new perspectives and opportunities for youth to meet and learn from successful business professionals.

## WHAT'S AHEAD

### BUILDING A COMPETITIVE WORKFORCE FOR REGION 2000

- The Workforce Development Board continues to be the focal point for workforce development planning and initiatives.
- We will move from a single workforce center to a workforce system with multiple access points across the whole region, including electronic access.
- We will become more engaged with the education and training providers in the region to ensure that they have the information and resources to meet the needs of area employers.
- We will seek ways to become more entrepreneurial and develop additional financial resources beyond the relatively small amount of federal funding the region currently receives.
- With a newly reorganized board, the Region 2000 Workforce Development Board is poised to move strategically toward building a stronger workforce system and contribute to the personal development of all citizens and economic development of all communities in the region.

### WORKFORCE STRATEGIC PLAN FOR FY 2016

Over the next year the Region 2000 Workforce Board will focus on developing a workforce system that meets the needs of both employers and career seekers in the region.

#### HIGHLIGHTING A KEY SECTOR OF REGION 2000

#### Manufacturing

**Employees: 14,523**

**Average wages:  
\$56,756**





## WORKFORCE DEVELOPMENT BOARD MEMBERS

Blondie Anderson, United Cherokee Indian Tribe of Virginia  
Vanessa Angus, Amherst County Chamber of Commerce  
Traci Blido, Bedford County Economic Development  
Scott Brabrand, Lynchburg City Schools  
Joe Byron, Moore's Electric and Mechanical  
Sierra Carvajal, Southern Air, Inc.  
Selina Elswick, Sodexo/Liberty Dining Services  
Ebo Fauber III, Fauber Architects  
Walter Fore, Jr., Central Virginia Chapter of AFLCIO  
Michael "Scott" Francis, Integrated Technology Group, Inc.  
Bryan "Scott" Gillespie, Abbott Nutrition  
Sonny Harvey, RR Donnelley  
Ruth Hendrick, Central Virginia Community College  
Phillip Jamerson, Jamerson Lewis Construction, Inc.  
Christine Kennedy, Lynchburg Regional Chamber of Commerce  
Dennis Knight, Wiley/Wilson  
Linda LaMona, Goodwill Industries of the Valleys, Inc.  
Ronald Lovelace, Lovelace, Norvelle, Mathews, & Crews, PC  
Chris Markham, Central Virginia Manufacturing  
Nat Marshall, BWX Technologies, Inc. NPD-Board Chair  
Susan Martin, Bedford Area Chamber of Commerce  
John Mastroianni, Virginia Job Corps  
Kimberly McIvor, Virginia Employment Commission  
James Mundy, Lynchburg Community Action Group  
Elizabeth Narehood, Region 2000 Alliance  
Tamara Rosser, City of Lynchburg  
Charles Mann, AFL-CIO  
Luke Saechao, ACE of Central Virginia  
Roxanne Slaughter, Dept. of Aging & Rehabilitative Services  
Cheryl Toler, Innovairre Communications  
Sterling Wilder, Jubilee Family Development Center



## CHIEF LOCAL ELECTED OFFICIALS

Dean Rodgers, Amherst County Administrator  
Willie Craft, Appomattox County Board of Supervisors  
John Sharp, Bedford County Board of Supervisors  
Dr. James Borland, Campbell County Board of Supervisors  
Joan Foster, Lynchburg City Council

# COST EFFECTIVE LOCAL GOVERNMENT SERVICES

## APPOMATTOX TOWN COMPREHENSIVE PLAN

Local Government Council staff assisted the Town of Appomattox in creating their first Comprehensive Plan. Prior to this document, the Town of Appomattox and Appomattox County maintained a joint Comprehensive Plan. This Plan received substantial citizen input for shaping the future of the Town. The Plan addresses specific action items which will be necessary to encourage the desired results from the Plan.



## TOWN OF AMHERST COMMUNITY PROFILE

Local Government Council staff worked the Town of Amherst Planning Commission to develop a Community Profile that will provide the foundation for the Town's pending Comprehensive Plan update. More than just highlighting the valuable and unique characteristics of the Town of Amherst, the Community Profile document provides an overview of existing conditions, demographic profiles, and compilation of Town and regional services. The Community Profile will provide the foundation for completing the community visioning and future planning elements of the pending Comprehensive Plan update.

*Artwork can be seen throughout the Town of Amherst's Business District depicting the unique character and history of the community.*

## REGIONAL LIBRARY OPERATIONS ANALYSIS

Local Government Council staff completed the Region 2000 Regional Library Operation Analysis. This analysis sets forth an implementation program for the effort. Lynchburg invested in joining Bedford and Campbell Counties in their joint materials management system, allowing for sharing of resources across jurisdiction boundaries. Lynchburg and Campbell will be continuing to move towards a joint regional library system.







## COMMUNITY REVITALIZATION IN OLD TOWN MADISON HEIGHTS

*One of five homes rehabilitated in the Stumps Hill area of Old Town Madison Heights.*

The \$1,222,249 multi-year Comprehensive Community Development Block Grant (CDBG) to provide infrastructure and housing rehabilitation improvements in the small Stumps Hill area of Old Town Madison Heights is nearing completion. The project resulted in the rehabilitation of five homes, two being substantial reconstructed, or completely new homes. The project also resulted in upgraded water and sewer lines and street and drainage improvements in the project area. In addition, two homes, previously on septic tanks, are now connected to public sewer service.

## ADMINISTRATORS, TOURISM, HUMAN RESOURCES AND PURCHASING OFFICIALS MEET REGULARLY

Officials from many sectors of local government meet regularly with Local Government Council (LGC) staff to exchange best practices, ideas and learn new information.

In FY 16, tourism officials from throughout the region are developing plans for a regional tourism initiative using \$50,000 from the LGC to leverage other grants.

*Lynchburg 's Love sculpture, located along Percival's Island Trail, is a popular spot for tourist..*



# SERVICES AUTHORITY

## CLOSURE OF THE CONCORD TURNPIKE LANDFILL UNDERWAY

Work is nearly complete to close final 23 acres of the 1993 Concord Turnpike Landfill in Lynchburg. The \$4.2 million contract will cap the landfill and seal the solid waste with a 40 ml plastic liner.

Under the liner is 18" of clay and on top of the liner is 24" of soil material which is being prepared for seeding.

Once the landfill is closed at the end of 2015, the Services Authority will monitor and maintain as needed for the 30 year post closure period.



## FINANCIAL SAVINGS TO MEMBER LOCALITIES

The cost per ton to dispose of solid waste in Region 2000 remains well below Virginia's average costs, according to the 2015 Virginia Solid Waste Report published by Draper Aden Associates:

	Expected Waste Disposal in FY15 (in tons)	Virginia Average Cost (per ton)	Region 2000 Cost (per ton)	Savings to Members and Businesses in FY15
MEMBER	73,052	\$43.67	\$28.75	\$1,089,936
COMMERCIAL	132,294	\$45.20	\$38.75	\$853,296

REGIONAL RECYCLING RATE  
OF TOTAL WASTE FOR 2014



41.5%

PREVIOUS YEAR RATE 38.9%



## LATERAL EXPANSION AT THE LIVESTOCK ROAD LANDFILL

The Services Authority submitted a permit amendment to the Department of Environmental Quality for approval of a lateral expansion of an additional six acres between two previously permitted landfill cells to increase landfill capacity.

One half of an acre of wetlands will be replaced through the purchase of wetlands from a mitigation bank.

Using the air space in between two already permitted cells will increase the amount of solid waste to be disposed without expanding outside of the current landfill footprint by 50%. At current rates, this means an addition of six years to landfill life.



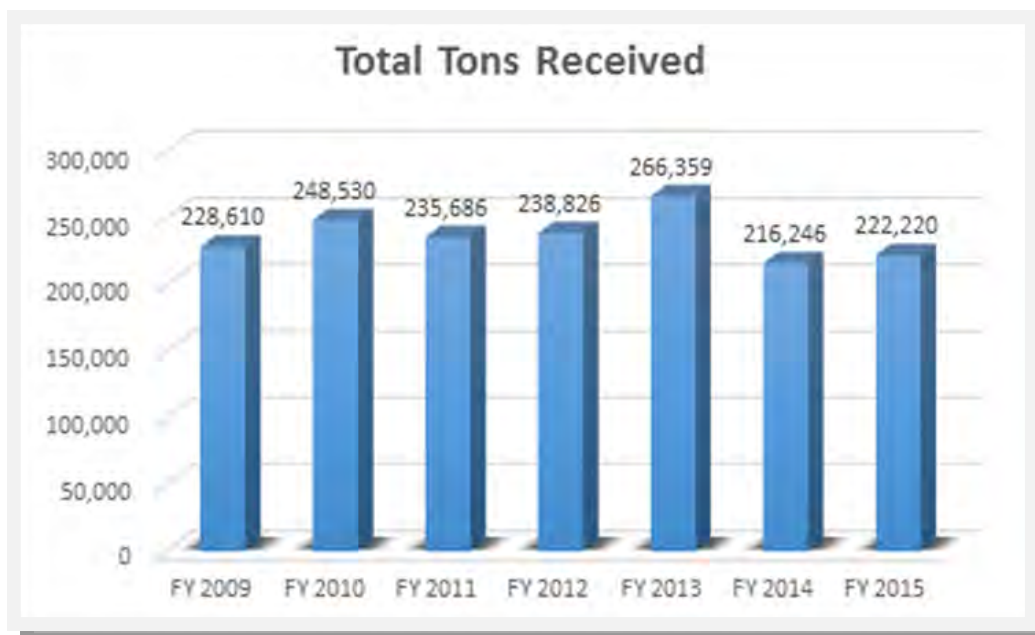
*Installation of pilot gas collection system at the Livestock Road Regional Landfill.*

## INSTALLATION OF PILOT GAS COLLECTION SYSTEM

After two years of accumulating solid waste at the Livestock Road Landfill located in Campbell County, there is now an adequate amount of solid waste to begin the collection of methane gas generated by the landfill.

A system of pipes has been installed which will be the foundation for a more permanent gas collection system that may be used to generate electricity. An estimated 130 per cu. ft. of landfill gas is currently being collected.

Additionally, the landfill gas is being treated for odors with carbon filter canisters and the methane is being burned in a flare system. When the methane quantity collected reaches a high enough level, the Services Authority will examine converting that methane to energy as is now done at the Concord Turnpike landfill.



# FINANCIAL OUTLOOK

Source of Funds	Amount	Percentage
WIA	\$1,494,209	40%
Regional Radio	\$1,285,869	35%
Transportation	\$466,752	13%
Services Authority	\$154,663	4%
Dues	\$152,286	4%
CDBG	\$80,282	2%
All Other	\$65,061	2%

Use of Funds	Amount	Percentage
WIA	\$1,433,008	43%
Regional Radio	\$883,730	27%
Salaries	\$522,458	16%
Transportation	\$169,539	5%
Benefits	\$142,273	4%
Operating	\$134,032	4%
CDBG	\$3,322	0%

For every **\$1** in local dues received by the LGC  **\$41.04** is generated in outside income in FY16



# ALTERNATE TRANSPORTATION



## RIDE SOLUTIONS PARTNERS WITH GLTC TO PROMOTE TRANSIT USE

### ASSIST IN REAL TIME TRANSIT SERVICE UPDATES

RIDE Solutions contributed to GLTC's commitment to provide real time transit route information through the use of Google Transit. RIDE Solutions partnered with GLTC to update the General Transit Feed Specification (GTFS) route data and software. Trillium Solutions, Inc. provided the update services. Once the data and system are updated the LGC staff, through our VDRPT program services, will assist in data maintenance.

### GLTC AND RIDE SOLUTIONS HOST TRY TRANSIT

RIDE Solutions partnered with GLTC in developing September Try Transit Week promotional materials that were distributed to area businesses with a focus on larger employers. Activity included some encouragement prizes and distribution of GLTC new rider passes.

### PROMOTING ALTERNATIVE TRANSPORTATION THROUGH PARTICIPATION EVENTS

Mayor Michael Gillette welcomed an enthusiastic crowd of bicyclists, walkers, and transit riders to ring in May's Clean Commute Challenge and Bike Month with a Proclamation reading on the Lynchburg City Hall steps on April 28. Mayor Gillette noted the importance of all modes of transportation and recognized the value in the biking, crosswalks, and public transit to the City of Lynchburg.

## BIKE SHORTS FILM FESTIVAL –A NIGHT OF FUN AT THE ACADEMY OF FINE ARTS

In 2015 the Bike Shorts Film Festival was held at the Academy of Fine Arts. Ninety-nine attendants were treated to food from Taco Shark Food Truck and the opportunity to enjoy thirteen local, regional, and international short films. Two films included Region 2000 resident submittals. Jeff Gray, owner of Scene 3, submitted the film "Get up" and Appomattox High School students, Travlyn Pantana and Dustin Lounge, produced the Audience Choice Film "The Fitzroy Caper". 2015 marked the second year for the Bike Shorts Film Festival. Special thanks to the screening sponsorship from the Academy of Fine Arts, Lynch's Landing, Imperial Tobacco Lofts, and Blue Ridge Outdoor Magazine. A May yearly event in Lynchburg is anticipated..



*Ninety-nine people attended the Bike Shorts Film Festival held at the Academy of Fine Arts in 2015.*

### **Program Services Provided At No Cost to Workplace Partners**

- Carpool Matching
- Customized Parking Programs
- Develop Marketing Collateral
- Guaranteed RIDE Home Travel Geocoding
- Business Bike Rack Program

# FY 2016 PROJECTS: REGIONAL ROAD AHEAD

## 2015-16 WORK PROGRAM HIGHLIGHTS

### COMPREHENSIVE ECONOMIC DEVELOPMENT STRATEGY



The foundation for the region's economic development efforts lies in our regional vision. Our economic development vision shapes our goals and strategies for both the economy and quality of life in Central Virginia. We build consensus to acknowledge and implement that vision through our Comprehensive Economic Development Strategy (CEDS).

First developed in 2011 and updated in 2013, the Region 2000 CEDS will undergo a full examination and review in an eighteen month process beginning in 2016. The process will be similar to 2011 when we formed a leadership committee who met over a twelve month period to examine the region's economic development assets and opportunities.

The CEDS will update the priority economic development targets for the many organizations working to make our community more attractive for businesses to expand or locate.

### CENTRAL VIRGINIA TRAINING CENTER

The Local Government Council will work with Amherst County and the Region 2000 Business and Economic Development Alliance to seek out alternatives and opportunities to re-use the Central Virginia Training Center in Madison Heights. The facility has over 350 acres and 90 buildings on campus. It is slated to close in 2020.



### REGIONAL FOOD HUB FEASIBILITY STUDY



The Local Government Council is coordinating a feasibility study to examine the possibility of establishing a food hub in the region. The project will be led by Agriculture and Community Development Services (ACDS) of Columbia, Maryland.

Half of the \$38,550 project comes from the Virginia Department of Housing and Community Development's Building Collaborative Communities program and the balance from the Local Government Council's member dues.



## STORM WATER TECHNICAL ASSISTANCE

Local Government Council staff is providing technical assistance to member governments to implement new storm water regulations. We meet regularly with DEQ and local government staff to share best practices and share responses to the new regulations.

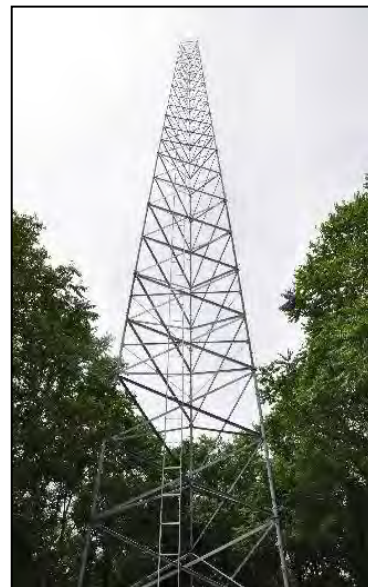
## REGIONAL RADIO COMMUNICATIONS BOARD

Amherst, Bedford and Lynchburg share a regional communication infrastructure that consists of eleven towers covering over 1,000 square miles. Over 2,800 communication devices use this Harris radio infrastructure.

Sharing the system keeps the costs down and allows interoperable communication between any public safety team throughout the coverage area.

The work proceeds to upgrade the 1996 equipment to a sixteen tower system with state of the art digital equipment for more reliability and better coverage.

The Local Government Council provided the financing mechanism for a \$13 million borrowing and is assisting the Radio Board in procurement and financial management of the project.



## ACCESS/SAFETY STUDY OF ROUTE 811

Staff and consultants will work with Bedford County to examine the Route 811 Corridor from Route 221 to Turkey Foot Road. The study goal is to identify traffic operations and geometric needs required to reduce congestion, improve safety, and provide necessary capacity. Multimodal accommodations will also be considered.



## APPOMATTOX COUNTY COMPREHENSIVE PLAN

Local Government Council (LGC) staff will aid Appomattox County in reviewing and revising the existing Comprehensive Plan to allow for greater clarity and succinctness.

LGC staff will work with the Joint Planning Commission, the representative body for both Appomattox County and the Town of Pamplin City, in order to update data, goals, objectives, and strategies as well as reformat and revise the document where applicable.



# Local Government Council

## COUNCIL MEMBERS

---

Susan Adams—Appomattox County

Carl Boggess—Bedford County

Ken Bumgarner—Town of Amherst

Mayor Phyllis Campbell—Town of Brookneal

Waverly Coggsdale—Town of Altavista

Joan Foster—City of Lynchburg

Bill Gillespie—Town of Appomattox

Stan Goldsmith—Campbell County

Stacey Hailey—Town of Bedford

Mayor Paul Harvey—Town of Appomattox

Jack Hobbs—Town of Amherst

Don Kidd—Amherst County

Charles Kolakowski—Town of Bedford

Megan Lucas—Region 2000 Alliance

Mayor Mike Mattox—Town of Altavista

Kim Payne—City of Lynchburg

Dean Rodgers—Amherst County

Frank Rogers—Campbell County

Delegate Scott Garrett—House of Delegates

John Sharp—Appomattox County

Gary Tanner—Appomattox County

Russell Thurston—Town of Brookneal

## STAFF

---

Gary Christie, Executive Director

Robert White, Deputy Director of Planning  
& Core Services

Rosalie Majerus, Deputy Director of Finance

Emmie Boley, Financial Services Professional

Clarke Gibson, Solid Waste Director

Matt Perkins, Administrative Program Coordinator

Philipp Gabathuler, Senior Planner, GIS Coordinator

Kelly Hitchcock, Senior Planner

Scott Smith, Senior Planner

Susan Cook, Administrative Assistant

Ben Bowman, Workforce Development Director

Lori Cumbo, Workforce Development Operations  
Coordinator

828 Main Street, 12th Floor | Lynchburg, Virginia 24504  
434.847.3491

[www.localgovernmentcouncil.org](http://www.localgovernmentcouncil.org)